



BluePrint Foundations

An Entry Level Solution to Meet your Basic PCB Documentation Needs

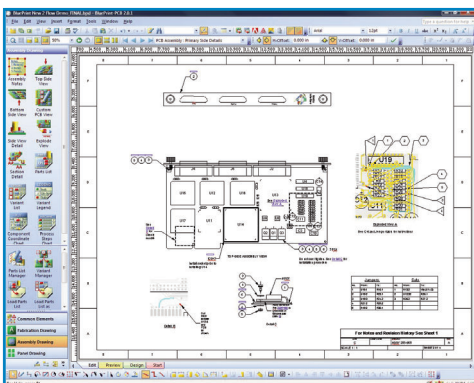
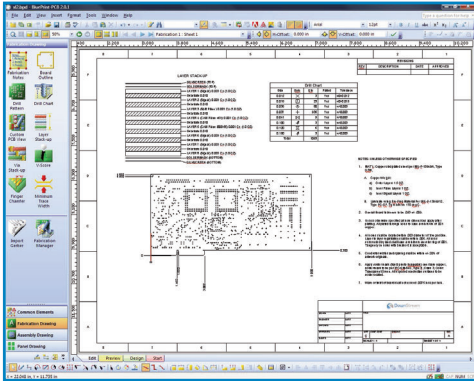
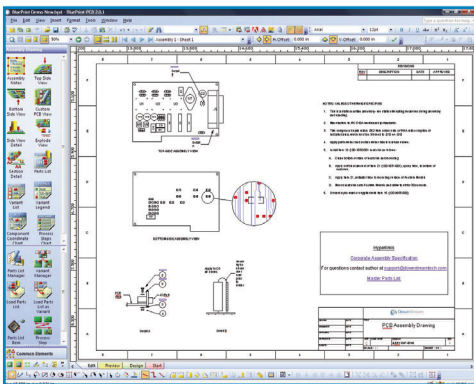
BluePrint Foundations™ is an entry-level, value-based BluePrint configuration that provides basic functionality to create electronic PCB documentation. BluePrint Foundations contains everything necessary to start automating your PCB documentation process to quickly create electronic PCB fabrication and assembly instructions. The solution is modular and can be incrementally upgraded at any time to meet your evolving needs.

BluePrint Foundation Features and Functionality:

BluePrint Foundations meets basic PCB documentation needs. This configuration contains Fabrication Tool Pallet, Assembly Tool Pallet, Insert Object, and Web Publisher, plus your choice of one CAD Layout import option (PADS, Allegro, BoardStation, Expedition, Zuken, OrCAD, or Altium Designer).

- Use PCB CAD data to drive the documentation process
- Drag and drop automatic formatting of PCB views
- Uses Design CAD Data for intelligent PCB view display
- Inserts Gerber, DXF, PDF, JPEG, BMP, AVI, WAV
- Built in word processing with spell check
- Intelligent note blocks on multiple pages
- Hyperlink between notes, callouts, and details
- Automatic drill chart creation
- Support for drill tolerances
- Automatic layer stack up detail creation
- No hiding and displaying of layers to produce documentation
- Real time viewing of PCB documentation (no output required)
- Export to HTML for web viewing
- Free BluePrint document viewer download

With BluePrint, DownStream has revolutionized the way PCB Fabrication, Assembly, Panel and Rework documentation is created.



Data Importation

BluePrint uses PCB CAD data to drive the documentation process. Components, pins, assembly mounting sides, layers, vias, nets, assembly variants, part attributes, drill holes and symbols, are just a few of the data records that can be imported into BluePrint to accurately create PCB document elements.

Digital content such as JPEGs, BMPs, GIF, etc may be imported and used in the drawing. BluePrint also allows the importation and use of audio and video files to be imported and stored with the documentation package. The multi-media files may be linked within the documentation drawings.

Data from other Windows® applications can be imported and used in the BluePrint documentation package. BluePrint imports PDF, RS274X, DXF, XML, ODB++, JPEG, GIF, TIF, BMP. BluePrint's clipboard function also allows cutting and pasting with other applications including text and raster graphics.

All elements are added by dragging and dropping. All drawing elements: PCB Views, Charts, details, text boxes, note blocks, etc; are treated as elements on the drawing and can be quickly added and modified. Each element may be scaled, formatted, transformed (Rotated, mirrored, flipped, etc) independently of each other. There is no limit on the number of elements that can be placed on a drawing.

Fabrication Tool Pallet

Consists of basic fabrication drawing elements and tools. Support for PCB Views, include board outline, drill pattern, drill chart - support for detail wizards include: layer stack-up; finger chamfer, minimum trace width, V-score.

Assembly Tool Pallet

Consists of basic assembly drawing elements and tools. Support for PCB views include: top/bottom side, parts list manager, integral parts list and component coordinate chart.

Insert Object

Allows the storage of external files within the BluePrint release package.

Web Publisher

Allows for the creation of PCB release packages in HTML format.

